

## **KIDBY VILLAGE HALL AND INSTITUTE SAFE OCCUPANCY AND FIRE PLAN POLICY**

### **Introduction**

This policy outlines the number of people that can safely occupy Skidby Village Hall, using established central legislative guidance. All those using the hall – whether hirers for their own clubs and events and the village hall management committee for its events – must adhere to these limits.

The following information has been extracted from Home Office guidance on fire safety risk assessments for small and medium places of assembly under the Regulatory Reform (Fire Safety) Order 2005 (further information on the [Gov.uk website](#)) and the Building Regulations Approved Document B Volume 2 (ADB).

### **How safe occupancy is calculated**

The occupancy figure for any building is based on the lesser of the two following calculations; the number of persons who can safely reside in the premises (using the floor space factor) and the width and capacity of the exit routes to allow them to escape safely. This is the legislation used by Humberside Fire and Rescue Services and is featured on their website [here](#).

### **Skidby Village Hall safe occupancy limits**

Using the formula based on floor space alone, the main hall has an occupancy figure of 223 persons and the small hall has an occupancy figure of 89 persons. However, factoring in the fire exits and their relevant dimensions, the main hall safe occupancy figure drops to 122 persons and the small hall drops to 60 persons.

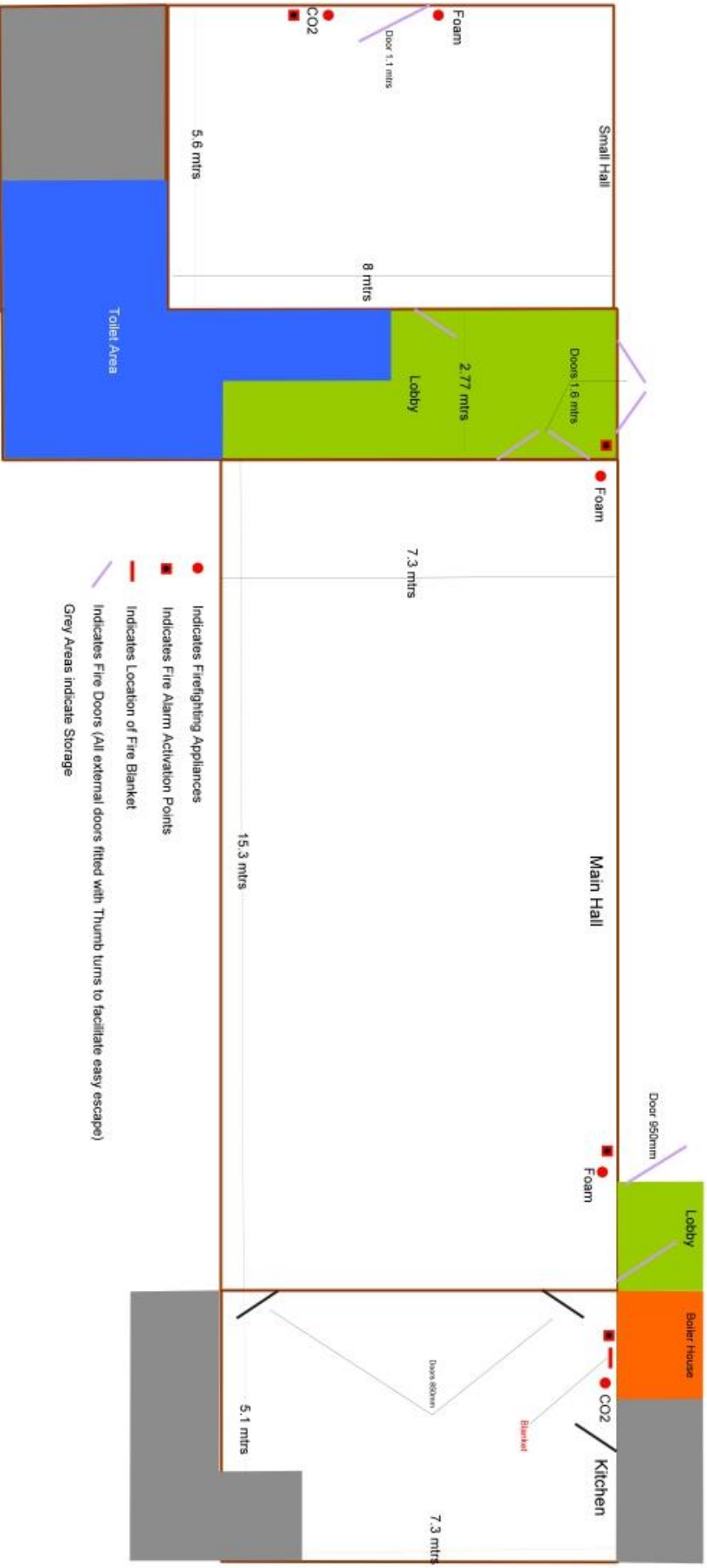
Based on the regulations and following best practice, the later figures must be considered as our maximum. Therefore:

- Main hall occupancy limit: 122
- Small hall occupancy limit: 60
- Total occupancy: 182

Note: areas such as the lobby, kitchen, storage and toilet areas cannot be counted in reaching the figures that have been achieved.

### **Location of fire exits and firefighting appliances**

Please see plan overleaf.



- Indicates Firefighting Appliances
- Indicates Fire Alarm Activation Points
- Indicates Location of Fire Blanket
- ∩ Indicates Fire Doors (All external doors fitted with Thumb turns to facilitate easy escape)
- Grey Areas indicate Storage

Last reviewed on: 02.12.2024

Due for renewal on: 02.12.2026